

GTS100



DESCRIPTION

The high-precision, high-reliability NTC thermistor is connected to the wire and encapsulated into the required shape with insulating, heat-conducting and waterproof materials, which is convenient for installation and remote temperature measurement.

FEATURES

- Wide resistance range: 1K Ω ~500K Ω
- Resistance and B value are high precision, good consistency, interchangeable
- Good insulation, high reliability, fast response,
- Double-layer sealing process, good insulation and anti-mechanical collision, anti-bending ability and high reliability
- It can work stably for a long time (annual resistance value drift rate $\leq 1\%$)
- It can be packaged according to the installation conditions used, which is convenient for users to install.
- Operating temperature range: -40~300 $^{\circ}$ C
- With special manufacturing process and reliable sealing structure, the average life of the product can reach more than 10 years.

APPLICATION

NTC temperature sensor is mainly used for temperature measurement and control of household air conditioners, car air conditioners, refrigerators, barbecue pits, deep fryers, induction cookers, soya-bean milk makers, electric ovens, kitchen utensils, floor heating, 3D printers, etc.

DIMENSIONS

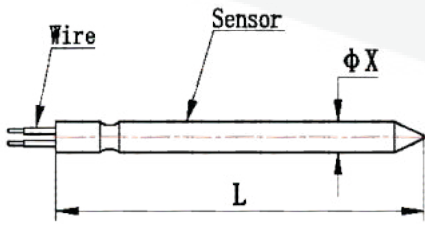


Fig.(a)

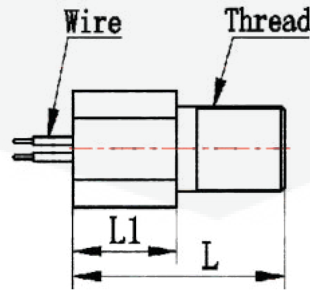


Fig.(b)

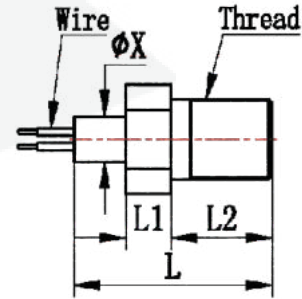
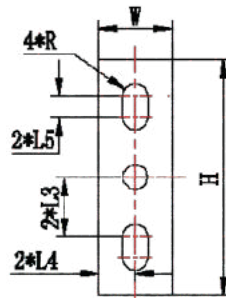
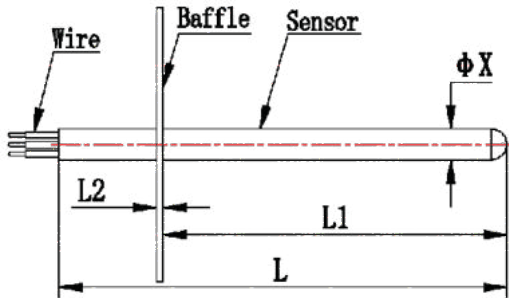
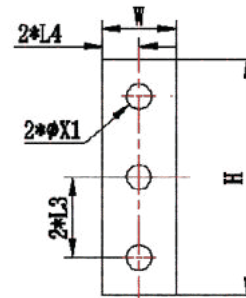


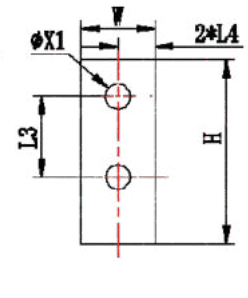
Fig.(c)



A Baffle



B Baffle



C Baffle

Fig.(d)

PARAMETERS

R value R25	1KΩ ~ 1400KΩ(1K,2K,4.7K,5K,10K,15K,20K,30K,50K,100KΩ)etc.
B value R25/R50	3270K ~ 4650K(3270K,3380K,3470K,3550K,3700K,3950K,4200K,4650K)etc.
R25 accuracy	±1% · ±2%
B value accuracy	±1%
Temperature range	-40 ~ +300℃
Shell size	Diameter φ1.5~ φ9mm, length 3mm~1000mm
Shell material	Stainless steel, copper, copper nickel plating, aluminum, ABS, PVC, epoxy.
Wire	UL Series(such as UL1007),Supply wire number, using temperature range, outside diameter and material requirements.
Connector	Molex, JST, Dupont, CWB, CJT etc.
Heat-shrinkable sleeve	PVC tube,;glass fiber tube;teflon tube

ORDER INSTRUCTION

When you placing order , please inform us the following parameters:

- 1.Application and working environment (whether to waterproof, acid or alkali and other)
2. R value R25 (refer to the technical parameter table)
3. B value R25/50 (refer to the technical parameter table)
4. Accuracy (±1%,±2%,)
5. Temperature range
6. Shell material (stainless steel, copper, copper plating nickel, aluminum, ABS, PVC, epoxy resin, etc.)
7. Shell pipe diameter and length (diameter*length)
8. Wire material and length (Common PVC, silicone, teflon)
9. How to deal with end of Line (hung tin, with connector)